

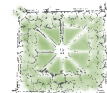


New Square, Phase IV
View looking through avenue of trees to the Centre



New Square, Phase IV
View looking through avenue of trees to Queen Square

If you would like this information in a different format, for example Braille, audio-tape, large print or computer disc, or community languages, please contact, Vicky Welchman, Tel: (0117) 9222969



Queen Square
ASSOCIATION



QUEEN SQUARE RESTORATION

PHASE IV

ISSUE 1 - SUMMER 2005

Queen Square Phase IV

We are pleased to advise you that the design for the new square linking Queen Square with the city centre promenade has now been agreed. There will be an exhibition in the Architecture Centre on Narrow Quay from 31 May 10 June, giving more details of how it has been developed. This leaflet includes a copy of the engineering drawings of the works for your information, together with some images to give you a flavour of the final scheme.



The works will be divided into two phases, which are, essentially, the works to change the road layout followed by the creation of the new square. As you will know, the vegetation has already been cleared from the Prince Street roundabout in advance of the other works – this was to prevent any harm to nesting birds later in the season. The roundabout will be given a temporary treatment with wildflower mix shortly to keep it tidier. We anticipate that the first phase, the highway works, will start after the Harbour Festival in the late summer and be completed by Christmas. The second phase should then start in the New Year, 2006, and be completed by the summer.

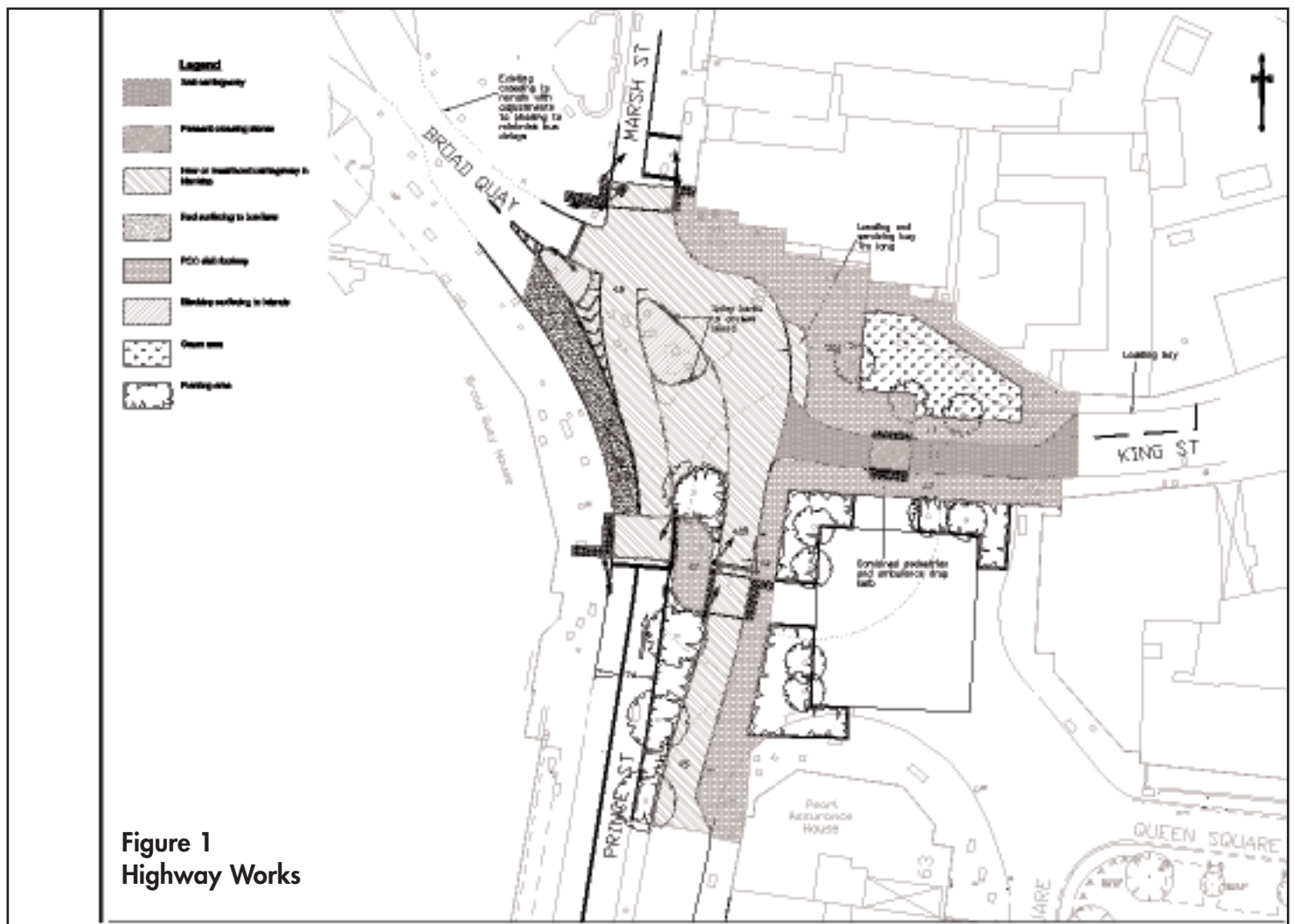
The contractors will be required to maintain a safe and accessible pedestrian route, a minimum 3m wide, into Queen Square throughout the works. There will clearly be some disruption to traffic during the works, for which we apologise in advance, but traffic will continue to flow throughout the contract period and any road closures will be limited to off-peak times. It is likely that the contractor's compound will be located in the area adjacent to the old post office, but their vehicles will not be allowed to park in Queen Square and access will be from Prince Street.

The two phases of the work are as follows:

Phase IV (A) Highway works

The revised highway scheme will see the removal of the Prince Street roundabout and its replacement with a signalised junction. (See Figure 1) Buses will still be able to turn round at the junction but the u-turn going northbound on Prince Street will be prohibited. King Street will be extended on its historic alignment to meet Prince Street, and in doing so create the space for the new public square. The central island will be removed further south on Prince Street to allow the right turn into Queen Square at Middle Avenue.

Pedestrians will cross Prince Street on a staggered puffin crossing, with the two sections being timed to allow most pedestrians to cross without having to wait in the central island. The large central island will allow the planting of lime trees and shrubs to soften this wide road and enhance the approach to the city centre. The central reservation will be unfenced. Pedestrians will cross King Street on a smooth surfaced stone route between the setts and a grass area will both enhance the frontage to the almshouses and allow for their potential future expansion, should that prove possible. The Marsh Street pelican crossing will remain in its current location.



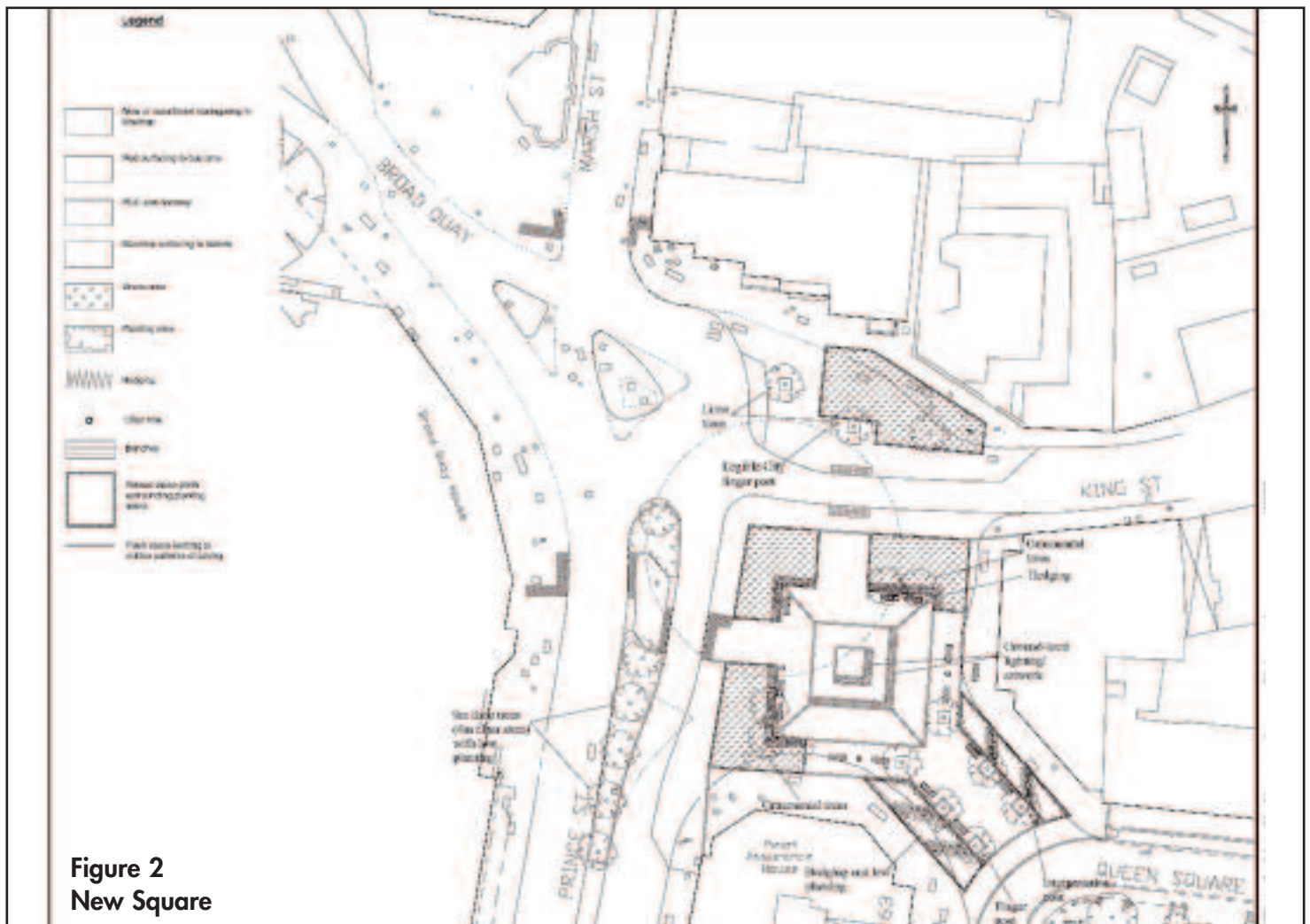


Figure 2
New Square

Phase IV (B) – new public square

Phase IV (B) sees the creation of a new public square to link Queen Square with the City Centre promenade and form an attractive and more fitting setting to the almshouses and entrance to King Street. (See Figure 2) The space will be enclosed to the north and west by a 1.2m high hornbeam hedge and ornamental trees, which will be complemented on the road side by grass. This will provide a permanent green edge to the space and create separation from the traffic, whilst preserving the important view to the city centre and St Michael's Hill.

An avenue of lime trees links the square with the diagonal route across Queen Square and reinforces the views between Queen Square and the city centre. The square will be paved with natural stone and there is the opportunity for creative lighting or artwork to be set into the paving – the exact details of this are still being developed. There will be seating throughout and it is hoped that one of the adjacent buildings may introduce an active ground floor café use to bring further life to the space. The design thus responds both to the practical requirements, for example, to keep a large area of uncluttered paved space to facilitate large events such as

the Half Marathon, and to the views expressed in the public consultation, for example to keep the design of the space simple and to retain the long view between the city centre and Queen Square.

We hope that you will enjoy the new square. If you have any questions please do not hesitate to contact us on the number detailed on this leaflet.

Vicky Welchman
Urban Design Project Officer
City Centre Projects and Urban Design Team

T: (0117) 9222969
F: (0117) 9223101
E: Vicky_welchman@bristol-city.gov.uk